

Metro's Long Game: An Integrated Service Network in Renton

Renton City Council Committee of the Whole

August 12, 2019

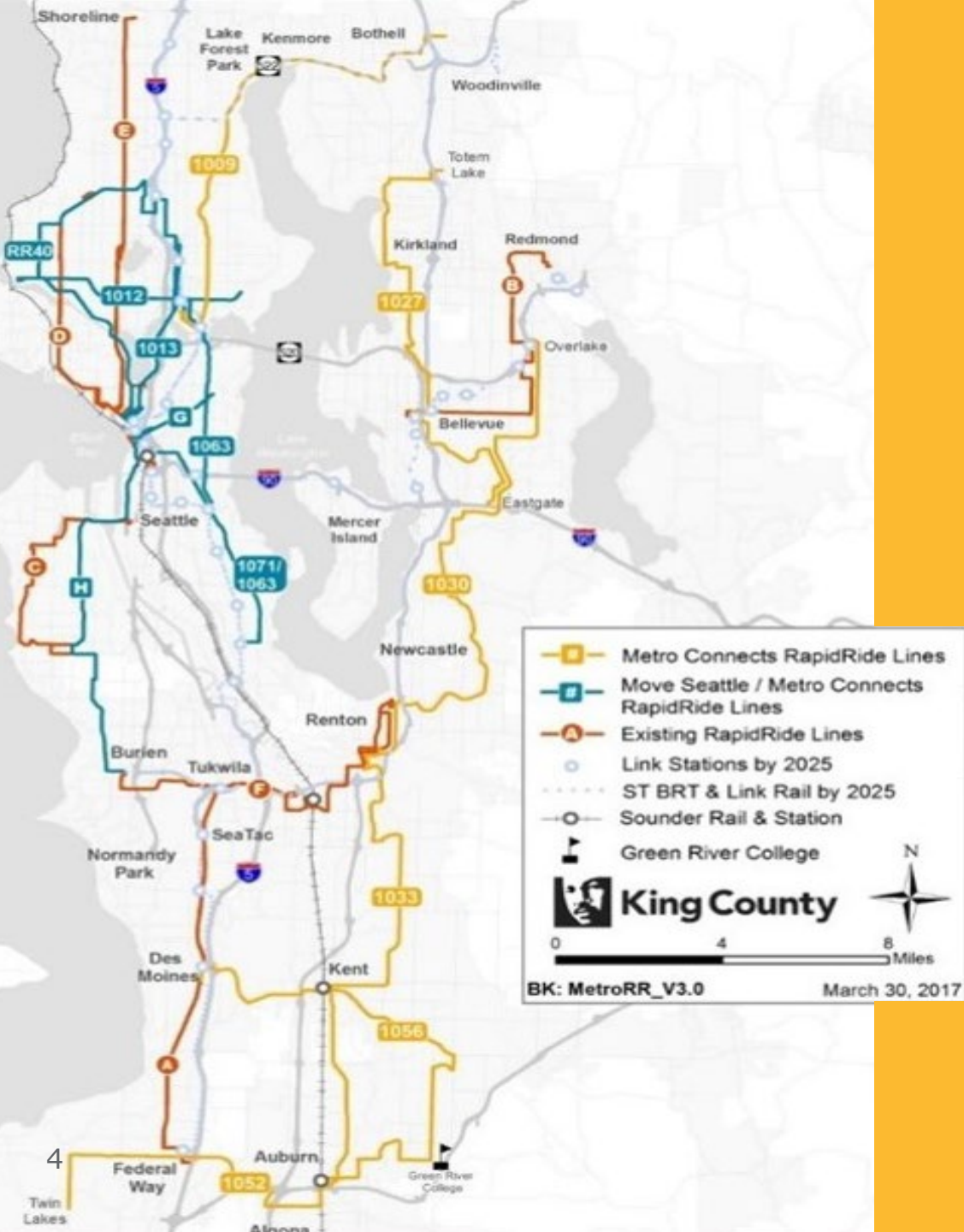
Agenda

- **METRO CONNECTS**
- **Metro's Long Game: An Integrated Mobility Network**
- **Service Planning and Investments in Renton**
- **Renton Transit Access Study**
- **Next Steps**

METRO CONNECTS

METRO CONNECTS

- Metro's adopted long-range vision
- Identified a network of high capacity transit throughout King County
- Integrated transportation system connecting people and places
- Shaped by input from cities, passengers, transportation agencies, businesses and other stakeholders



MORE SERVICE

MORE CHOICES

ONE SYSTEM

RAPIDRIDE



Getting to Metro's Long Game: An Integrated Mobility Network

METRO'S LONG GAME

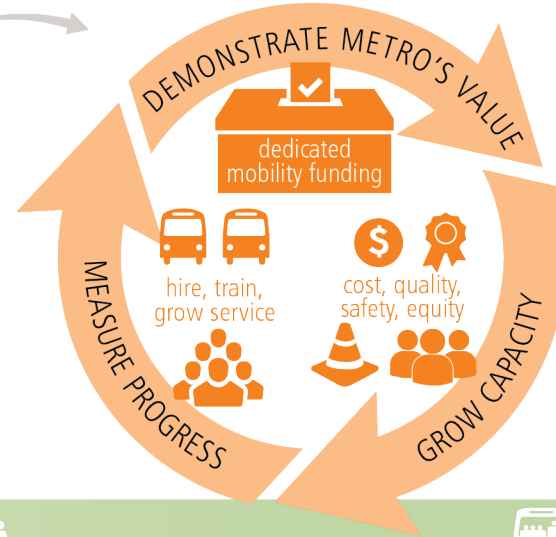
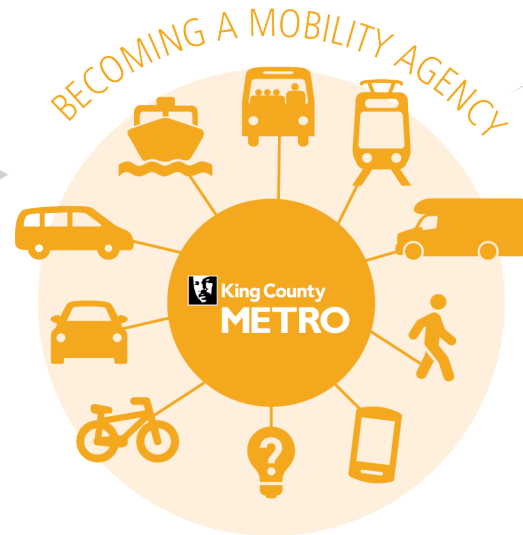


2019

- 4.1M** people in the region
- 4M** hours of service
- 400K** daily trips



RESOURCE STRATEGY



7 RAPIDRIDE EXTENSIONS
2021-2027

SOUND TRANSIT EXPANSION
2021-2024



2040

- 5.3M** people in the region
- 6.5M** hours of service
- 1M** daily trips

Becoming a Mobility Agency

As a value-driven, data-supported mobility agency, Metro will:

- Develop a regional mobility ecosystem with transit at the center and complementary shared mobility services
- Provide seamless, multi-modal mobility solutions
- Lower number of vehicles, vehicle miles traveled, congestion, and energy use
- **Be safe, sustainable, and equitable**

Determinants of Equity

- Access to health and human services
- Healthy built and natural environments
- Quality education
- Family wage jobs and job training
- Early childhood development
- Economic development
- Strong, vibrant neighborhoods
- Affordable, safe, quality housing
- Access to parks and natural resources
- Equity in county practices
- Access to affordable, healthy, local food
- Equitable law and justice system
- Community and public safety
- Access to safe and efficient transportation



Metro Service Planning and Implementation in Renton

Fall 2019 Service Investments
RapidRide I Line
Renton-Kent-Auburn Area Mobility Plan

Fall 2019 Service Investments

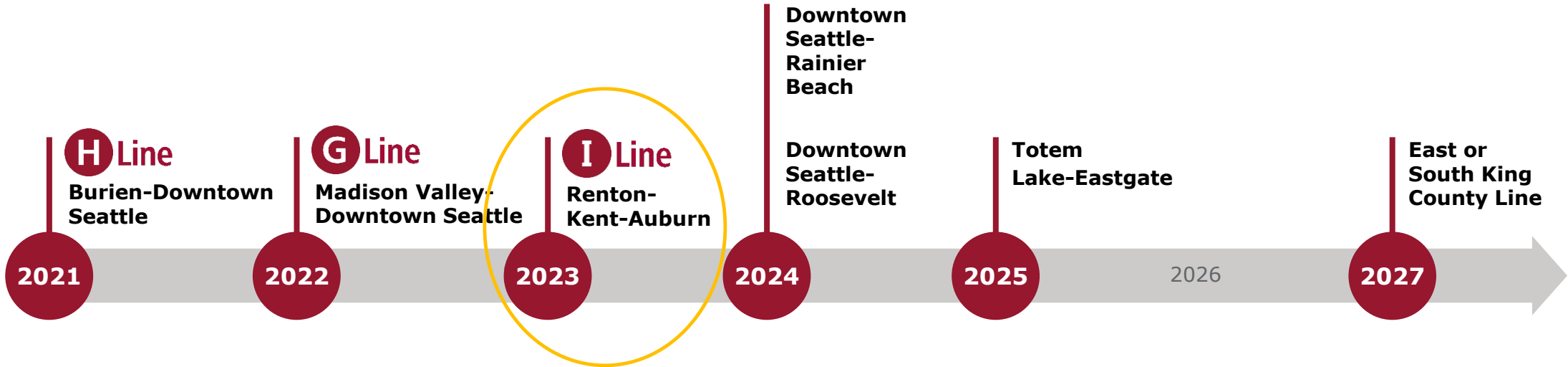
Metro will directly invest 111 weekly service hours for routes serving Renton.

Fall 2019 investments include:

- **Route 101:** Adding 4 trips on weekdays, Saturday, and Sunday
- **Route 105:** Increasing Sunday frequency from every 60 to every 30 minutes
- **Route 107:** Adding 1 trip on weekdays and adjusting schedules to combine with Route 60 for 15-minute frequency between Beacon Hill Station and Renton Transit Center during evenings and nights
- **Route 906:** Increasing weekday peak frequency from every 60 to every 30 minutes



RapidRide Expansion Timeline



RapidRide Capital Investments

- Passenger Facilities (New Kit of Parts)
- Accessibility
- Speed & Reliability
- Communications & Technology
- Safety, Comfort & Security
- Access to Transit



RapidRide customer amenities



Conceptual design rendering of a shelter location. Actual design may vary.



RapidRide I Line: Renton, Kent & Auburn

- Current routes 169 & 180
- 6,000 Daily Riders
- ~\$120M expected capital investment
- Applying for FTA Small Starts Funding in 2020



Planning
2019

Preliminary
Design
2019-2021

Final Design &
Construction
2021-2023

Start Service
September 2023

Renton-Kent-Auburn Area Mobility Plan

- Increase network efficiency and invest in **equity priority areas**
- Develop **a network** of mobility services
- Create a single route from Renton to Kent to Auburn to be upgraded to the **RapidRide I Line**



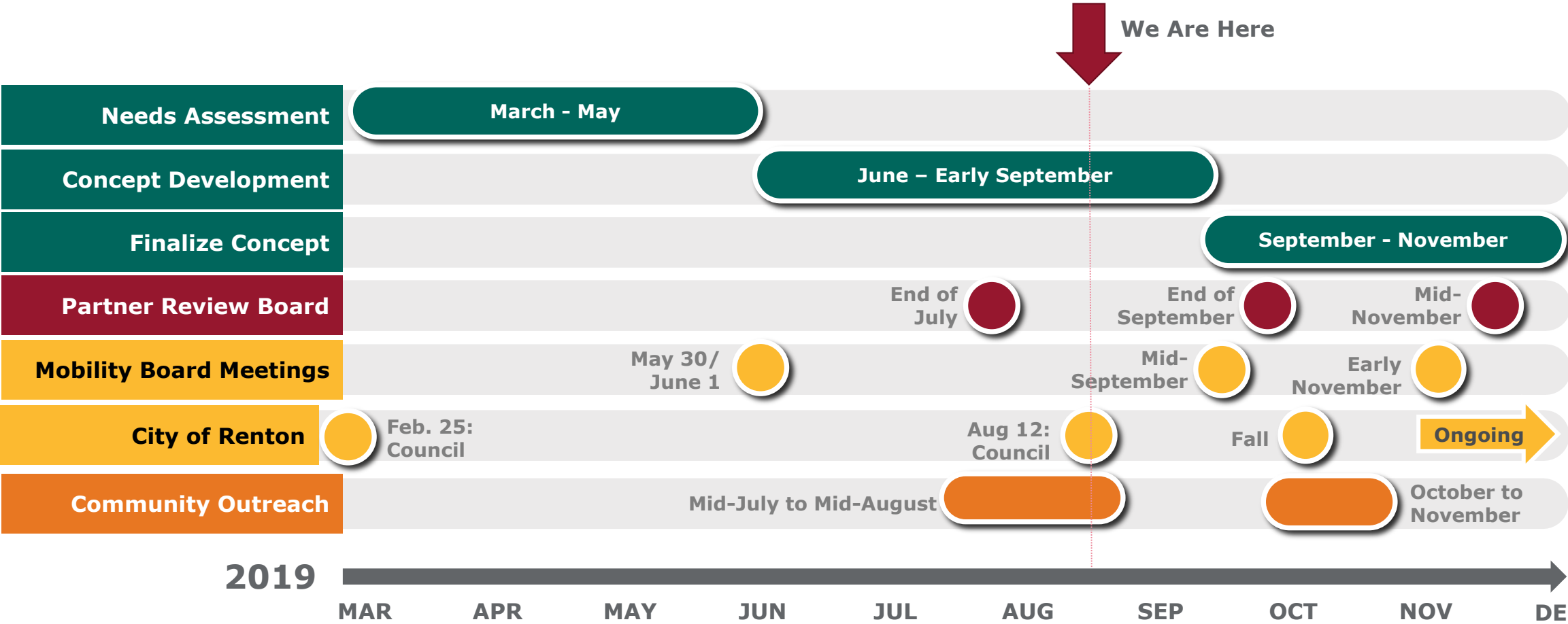
**Outreach and Plan
Development**
Now – Fall 2019

Service Change
Ordinance
Developed
Fall 2019 – Spring 2020

Service Change
Education
Summer 2020

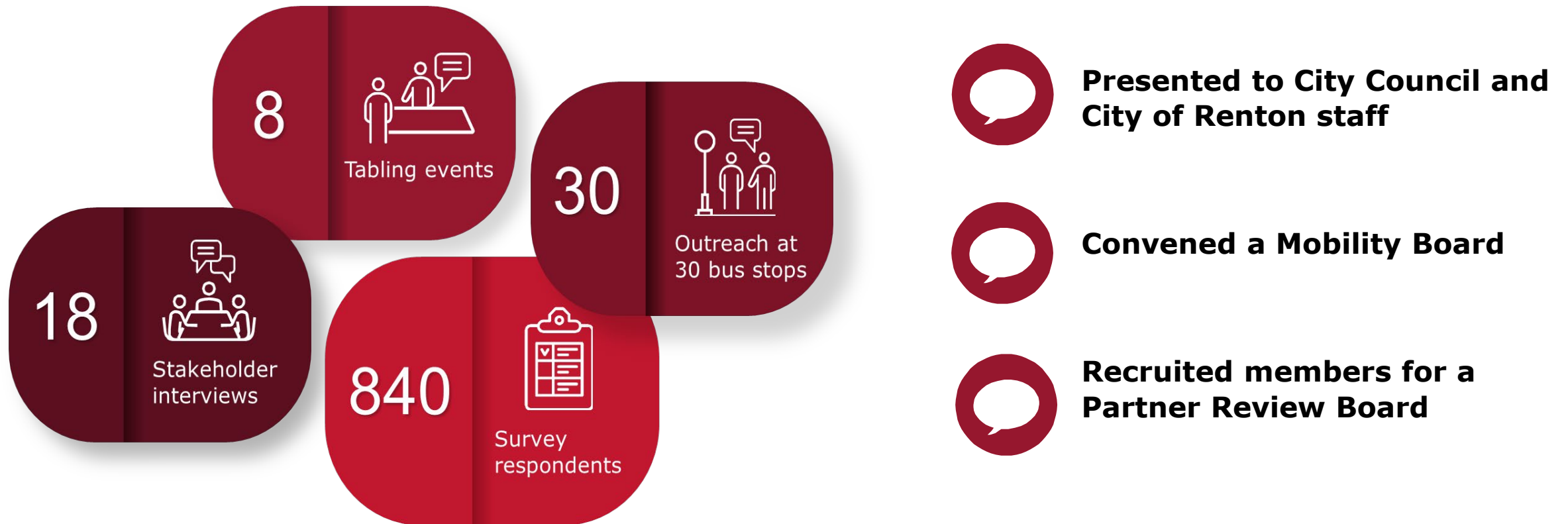
Service Change
Begins
Sept 2020

I Line and Area Mobility Plan Timeline



Needs Assessment Phase: Outreach and Engagement

Metro collected feedback and shared project information the following ways:



Needs Assessment Phase: What We've Heard

Preliminary feedback from City of Renton, Mobility Board, public engagement, and needs survey

Key Themes

Need for more service frequency and span, better transit access and coverage in Highlands, better east-west connections

Ensure RapidRide stations serve important local destinations, including regional transit centers and service providers

Continue to prioritize engaging historically underserved populations



How Feedback will be Incorporated?

Service change concepts

Bus station locations and service investments

Public Involvement Plan

Summer Outreach and Engagement

- Share information and gather input at community events
 - Renton River Days
 - ORCA To-Go at City Hall
 - Renton Refugee Forum
- I Line online open house
- Renton-Kent-Auburn Area Mobility Plan survey
- Mobility and Partner Review Boards



***View the online open house and take the survey
at: www.kingcounty.gov/metro/iline***

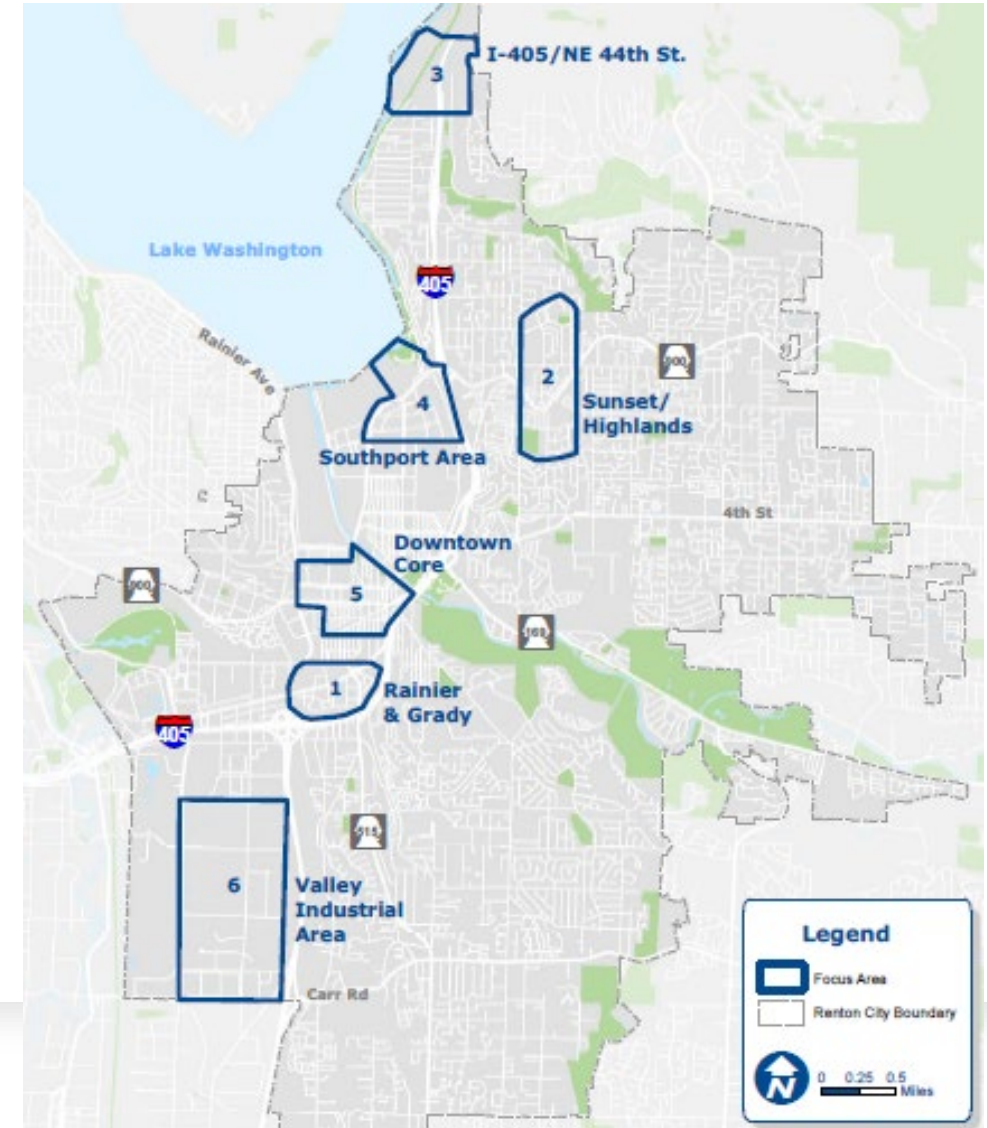
Renton Transit Access Study King County Council Proviso

What is the Renton Transit Access Study?

A study of barriers to transit and identifying potential solutions

Approach: Coordinate with concurrent Metro service projects. Focus on six areas in Renton.

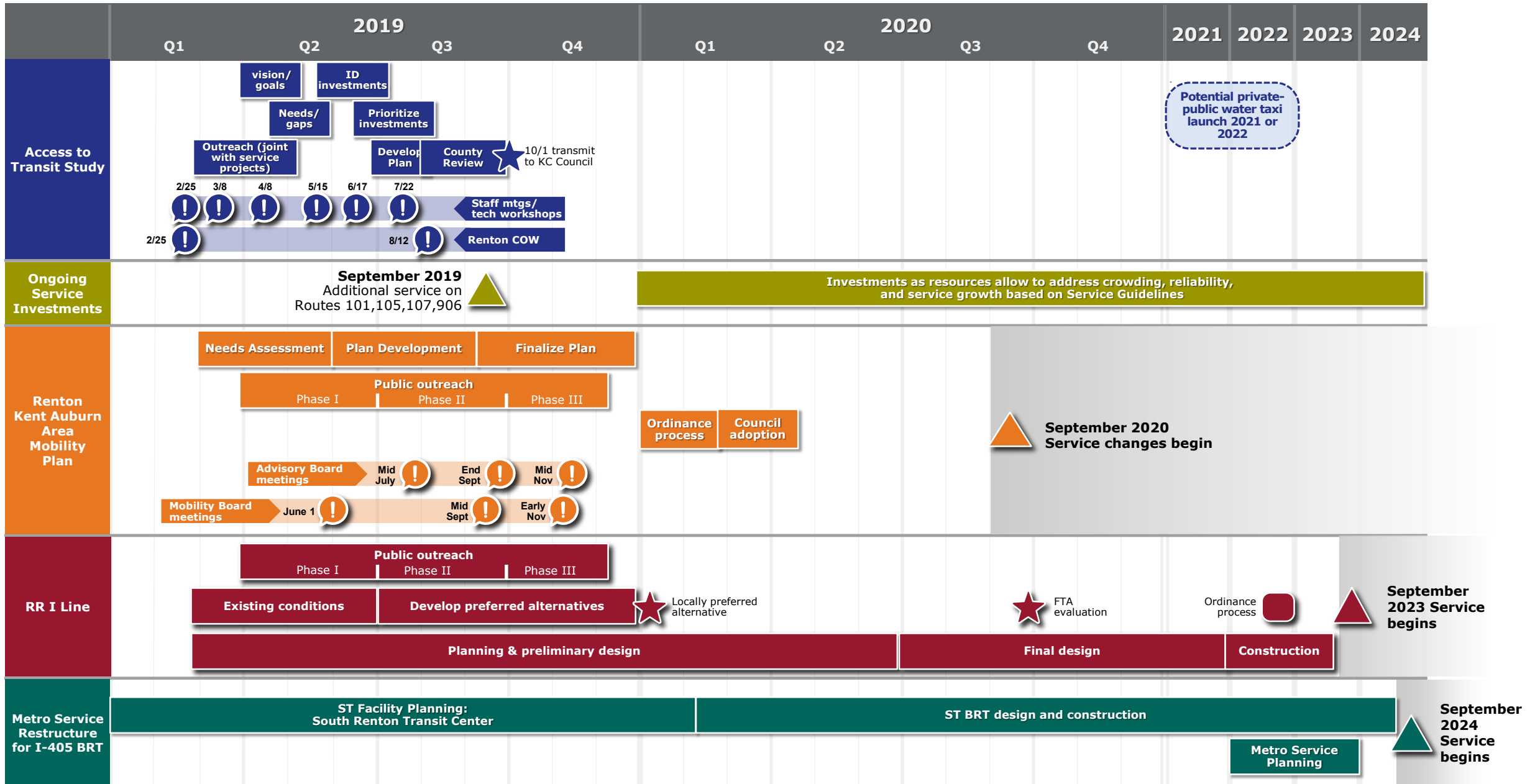
- Pedestrian & bicycle improvements, crossings, lighting
- Wayfinding
- Flexible services for first/last mile connections to fixed-routes
- Parking management
- Mobility hubs
- Demand management options



Concurrent Metro Projects in Renton

	Renton-Kent-Auburn Area Mobility Plan	RapidRide I Line	Access to Transit Study (Proviso)	Metro service integration with Sound Transit's I-405 BRT
Project Type	Fixed route and flexible service planning and implementation	Fixed route corridor service planning, capital elements, and implementation	Study of barriers to reaching transit and potential solutions	Fixed route and flexible service planning and implementation
Timeline	Planning 2019-20, service start Sept. 2020	Planning 2019-23, service start 2023	March-July 2019, study to Council Oct. 1	Planning 2022-23, service start 2024 with Sound Transit BRT
Geographic Scope	Includes Community Connections pilot projects in the Benson Hill Area	Auburn-Kent-Renton, portions of current routes 180 and 169	Focus areas*: <ul style="list-style-type: none"> ▪ Rainier/Grady Transit Center* ▪ Downtown Renton* ▪ Valley Industrial Area ▪ Lake Washington/Southport/water taxi* ▪ I-405/NE 44th BRT ▪ Sunset/Highlands * 	In Renton includes: <ul style="list-style-type: none"> ▪ South Renton Park-and-Ride (Rainier/Grady) ▪ Downtown Renton ▪ I-405/NE 44th BRT ▪ Sunset/Highlands (current all-day Route 240)

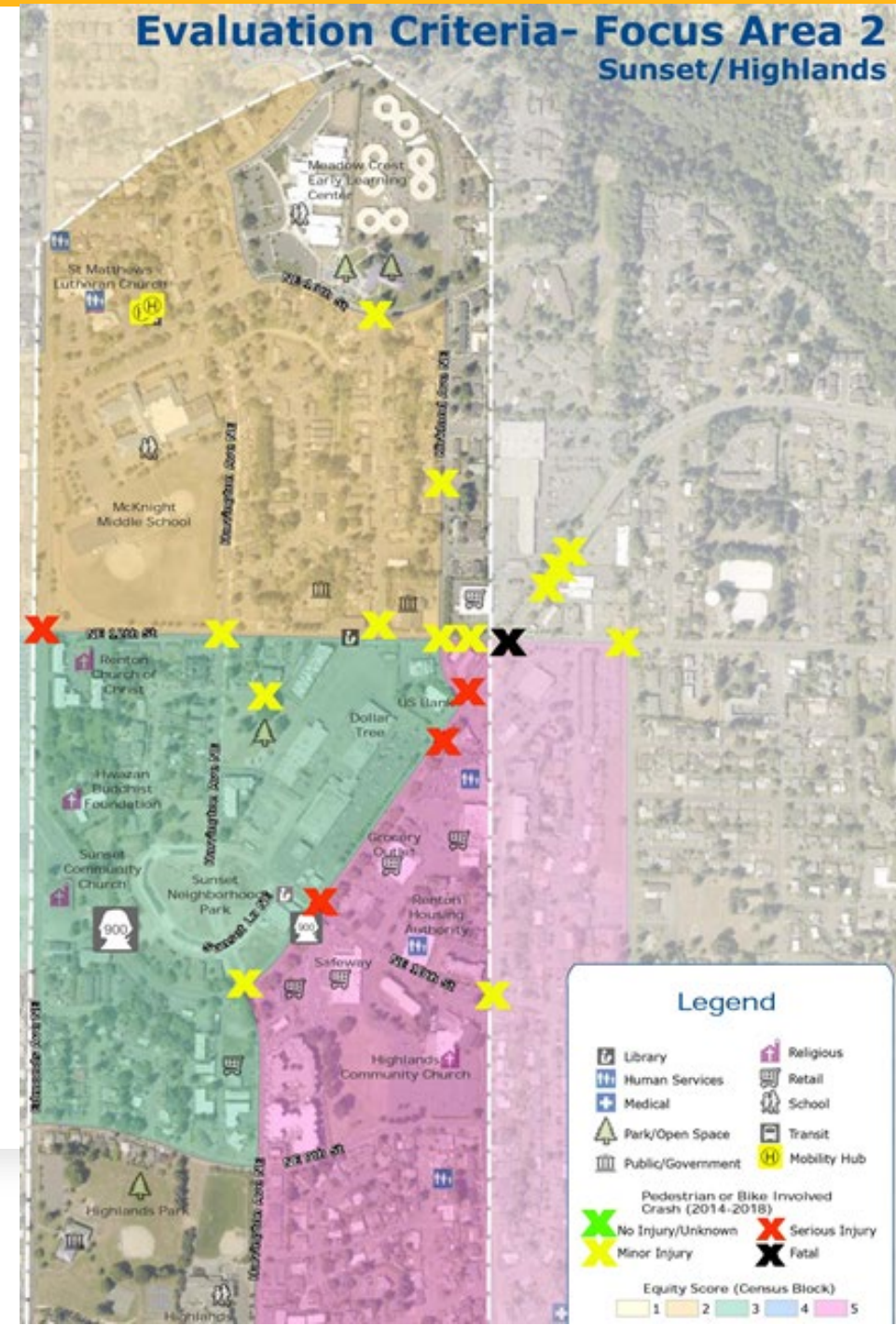
Concurrent Metro Projects in Renton: Timeline



Evaluating Gaps and Needs

- Equity: income, language, people of color, other access factors
- Safety: crash data involving people walking or biking
- Access to key destinations (current, future)
- Access to transit hubs (current, future)
- Feedback about barriers from city, public, community-based organizations as part of service projects

Evaluation Criteria- Focus Area 2 Sunset/Highlands



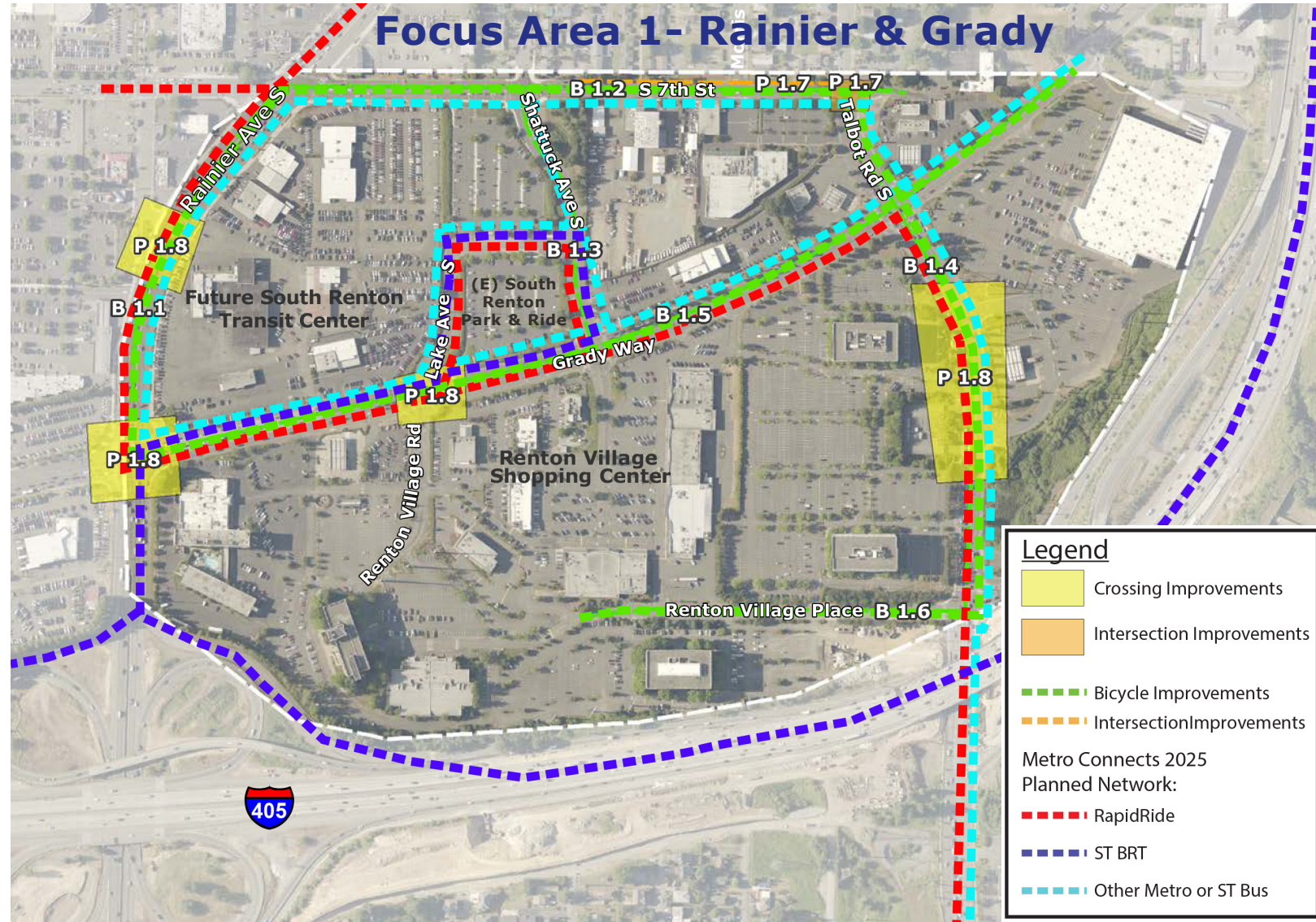
Solution concepts

Infrastructure

- Fill sidewalk gaps
- Improve intersection safety
- Improve corridor safety

Other access strategies

- First/last mile connections, on-demand services
- Car-share, bike/scooter share, bike parking
- Curb-space management, drop-offs
- Parking management: on-site, nearby
- Other mobility-hub treatments



Flexible Services and Other Access Solutions

Concept	Recommended for further study in
On-demand first/last mile services, TNCs/taxis, employer shuttles	Rainier & Grady; Southport, with water taxi; Valley Industrial area
Micromobility (bike/scooter share)	City-wide, with designated parking near transit, activity centers
Parking management, eg area-wide time limits, on-site pricing/permitting, garage management, real time availability	Rainier & Grady, Southport, downtown, NE 44th/I-405
On-site bike parking: racks, secure lockers, micromobility spaces	Transit centers, Southport/water taxi
Drop off areas, curb space management, access points	Southport, transit centers
Demand management incentives, pass programs, on-site amenities, guaranteed ride home, etc.	Major employers & property owners, eg Southport, Valley Industrial Area

Implementation and Funding

- **Pursue near-term actions as feasible**
 - Paint, signals
 - Policy considerations
 - Pilot projects, partnerships
- **Prepare for longer-term actions**
- **Continue working with Metro** on fixed route and flexible services, capital improvements, Safe Routes to Transit infrastructure partnerships
- **Apply for grants**, eg Regional Mobility 2020
- **Work with Sound Transit** on station design and funding



Next Steps

What's Next?



Concept Development Phase (through early-September)
Mobility Framework development



Online open house (through August 25)
Mobility Board (mid-September)



Renton City Council briefing (anticipated in October)

- Update on corridor concept and plan development
- Look ahead to locally preferred alternative

Coordination with City staff and Technical Advisory Committee (ongoing)

Questions?

DeAnna Martin

**Partnerships and
Engagement Manager**

(206) 477-3835

deanna.martin@kingcounty.gov

Greg McKnight

**RapidRide I Line Project
Manager**

(206) 477-0344

gmcknight@kingcounty.gov

Malva Slachowitz

**Senior Transportation
Planner, Connecting to
Transit Team**

(206) 477-5873

malva.slachowitz@kingcounty.gov